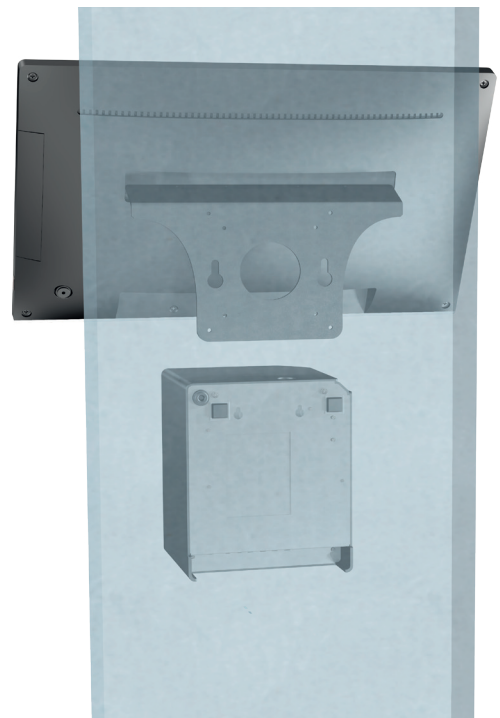




A pos with a massive  core  16:9

## THE COMPACT SOLUTION

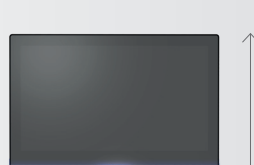
### Atos15 Wall THE POS YOU CAN HANG WHEREVER YOU WANT!



AN EXCELLENT SPACE-SAVING SOLUTION FOR ALL CATERING ESTABLISHMENTS!

Its strong point is the Interaction Design that gives the point of sale functionality and elegance, thanks to the unmistakable bracket of the ATOS15 range, redesigned for the Vesa Standard connection. This innovative device allows the POS to be fixed either on the wall or through one of the many multifunction arms commercially available.

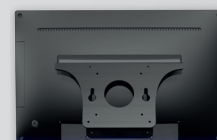
**ATOS15 WALL** - A POS solution that is easy to place in the most unthinkable places and optimizes the management of the point of sale even in the smallest spaces.



Height 55 mm



Length 257 mm



Width 390 mm



Weight 2660 gr

# ATOS 15 Wall

## HARDWARE



**Monitor** Size: 15,6"  
Resolution: 1366x768

**Touch Technology** Capacitive

**CPU** ARM Cortex A9 Quad Core @1GHz

**Operating System** Android 5.0.1 or above

**Storage Memory** 8GB eMMC

**RAM Memory** 2GB

**Interfaces** 3 x USB  
2 x RS-232 with RJ45 connector  
1 Ethernet 10/100/1000  
1 x RJ-11  
1 x Micro SD slot  
1 x Micro USB

**Audio** Stereo

**Options** Customer Display  
Dallas Reader  
Magnetic Stripe Reader  
NFC Reader

**Power Supply** 24v/2,5A

**Temperature** Operating: 0° - +40°C  
Storage: -20° - +60°C



fiscal printer: **Print! F**



printer: **Print!**

High resolution (8 dots/mm) graphic thermal printer, easy paper loading, automatic cutter

**Paper roll:** width: 79,5 mm +/- 0,5 mm; diameter 83 mm

**Printing speed:** 300 mm/sec - 250 mm/sec Print! S

**Printing system:** easy paper loading, automatic cutter

**Automatic cutter:** 1,5 million cuts

**Print Head:** 150 km

**Barcodes supported:** UPC-A/ UPC-E/ JAN13(EAN13)/ JAN8(EAN8)/ CODE39/ ITF/ CODABAR/ CODE93/ CODE128/QRCODE

**Power supply: external. Input:** 100-240 Vac, 50/60 Hz.  
**Output:** 24 Vdc, 2.5a, 60W

**Dimension:** W138 x L175 x H120 mm - Weight: 1320 g

### Interfaces

1 RS 232 serial port  
1 RJ11 port per cash drawer, 24V  
1 USB  
1 Ethernet  
1 RJ45 for external display

### Communication protocol:

RCH protocol  
Xon-Xoff protocol  
UPOS standard protocol  
JAVAPOS protocol  
Compatible with EPSON ESC/POS and STAR command sets

**Electronic Journal:** electronic journal on RCH multimedia card

**Languages:** PAN European languages (ENG, SPA, FRE, DEU ...); Asiatic Languages: Chinese, Japanese, Korean

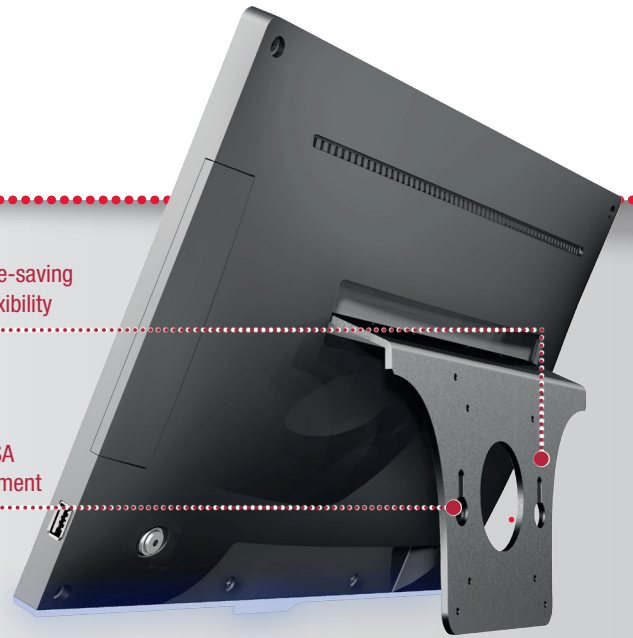
**SW Driver:** Windows X86 / X64 / Linux / OPOS driver



Space-saving flexibility



VESA attachment



## THE SOLUTION INCLUDES



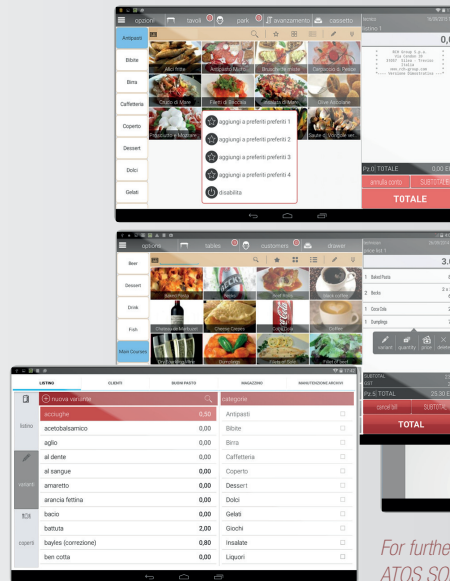
Point of Sale



Printer



Software Atos



The ATOS software manages your store thanks to:

- Point of Sale Front End**
- Orders Management**
- Clients Management**
- Reports Management**
- Settings Management**

For further information please refer to the *ATOS SOFTWARE leaflet*

## ACCESSORIES

**Print! 80mm thermal printer:** for kitchen tickets and invoices, with serial RS232 or USB connector

**Waiter's module for ordering:** It's a solution that simplifies the work of waiters in handling orders from the table.

**T5H Professional:** tablet is the ideal tool for order collection. Tested for intense use, it is reliable and extremely robust.

### i-Button

**Magnetic card reader**

**Scanner:** USB barcode reader

**USB pen** for backup and upgrade purpose

**SD Card** for backup

**USB Connection - Dongle USB combo Wi-Fi Bluetooth**



Waiter's



T5H Professional

## OPERATING SYSTEM



ANDROID

## INTERFACES



CASH DRAWER



MICRO USB



LAN



MICRO SD



USB

## OPTIONS



WI-FI



DALLAS I-BUTTON



MAGNETIC CARD READER



NFC